



Parts Specialist. Solutions Driven.



BRIC

Breathable & Robust Interconnection Center

www.chiefent.com

© 2023 Chief Enterprises LLC

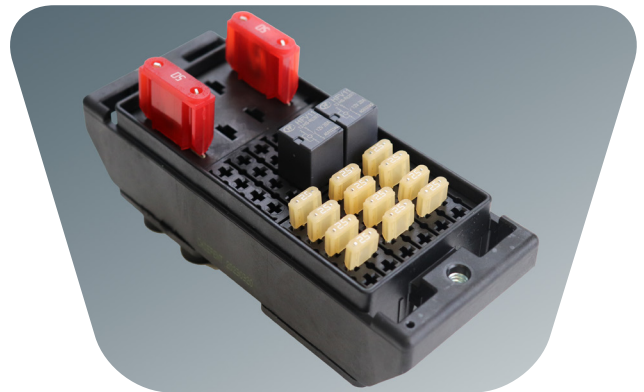


Competitive Advantages

With 19 different possible configurations, the Fusion is completely customizable and has the ability to house both low and high amp components by way of ultrasonic welding. The Fusion sports the same rugged and compact build as the 84-way BRIC® and is IP67 sealed.

- High Amp Components fit into One Module
- Hydrophobic Vent
- IP67 Water & Dust Protection
- Completely Configurable
- Ultrasonic Welded
- Sleek Body Design
- High Strength Reinforced Body
- High Impact Plastic Cover
- One-hand Cover Release
- M6 Steel Nuts for Mounting
- Custom Labels
- Low Minimum Order Quantities
- Diode Key Available
- Tether for Cover Available
- Mounting Brackets Available

***Consult Chief for additional details**



BRIC Fusion Component	Part Number
280 x ATO x 280 Base	C1107
Maxi Combo x 280 x Maxi Fuse Base	C1165
Maxi Combo x 280 x Maxi Combo Base	C1179
280 x 280 x Maxi Fuse Base	C1228
280 x 280 x Maxi Combo Base	C1233
280 x 280 x ISO Relay Base	C1234
Maxi Combo x 280 x ISO Relay Base	C1235
Maxi Fuse x 280 x Maxi Fuse Base	C1236
ISO Relay x 280 x ISO Relay Base	C1238
Maxi Combo x ATO x Maxi Fuse Base	C1243
Large Cover with CPAs, Seal & Vent	C753-1
Tether	P328-1
Fusion Lock TPA	P345
CPA for Cover	P346
CE M6 SEMS Screw	P424
Side Mount Bracket	P425

Reference QR code on Pg. 11 for Technical Data

Specifications

Dimensions:	155.3 x 62.0 x 65.0 mm
Number of Cavities:	Cavity Options on Reverse Side
Mounting:	M6 Steel Threads
Temperature Range:	-40 to 125 ° C Ambient
Ingress Protection Rating:	IP67 Water & Dust Protection
Terminal System(s):	TE MCP 2.8 TE MCP 6.3 TE MCP 9.5 Metri-Pack 800 Series



Order Online: www.chiefent.com

Call: 1-630-530-1224

2

Parts Specialist. Solutions Driven.

Configurations & Accessories

Count on Chief Enterprises for customized components engineered to your specifications. We can deliver pre-assembled parts ready for you to install.

The Fusion joins the BRIC® family as a versatile high amp option for the on and off-road OEM that supports fuses, relays, circuit breakers, and diodes. Cover options mirror the 84-way BRIC®, with hydrophobic vents, CPAs, and laser marking.

Components



Relays

The Fusion houses 280, ISO, & Maxi Relays



Fuses

The Fusion houses Maxi, Mini, and ATO style fuses



Circuit Breakers

The Fusion houses plug-in style circuit breakers



Diodes & Other

The Fusion houses diodes and other similar plug-in electrical components

Configurations



Maxi Combo x 280 x Maxi Combo



280 x 280 x Maxi Fuse



ISO Relay x ATO x Maxi Combo

Inquire about 16 other Fusion configurations...

Cover Options



Hydrophobic Vent



Cover Position Assurance



Laser Marking

Other accessories include Custom Labels, Mounting Brackets, Terminal Position Assurance, and Tethers.

Call Toll Free: 1-800-831-7294

Email: sales@chiefent.com



Check out the BRIC Fusion